



FISH & GAME NZ, SOUTHLAND REGION

AGENDA

FOR THE COUNCIL MEETING TO BE

HELD THE COUNCIL OFFICE

17 EYE STREET

INVERCARGILL

Thursday 27th March 2025

COMMENCING AT 6.00 PM

Monowai Jetty Development



NOTICE OF MEETING:

The next meeting of the Southland Fish & Game Council will be held on
Thursday 27th March 2025 at the Fish & Game Office Boardroom,
17 Eye Street, Invercargill
Commencing at **6.00pm**

AGENDA:

- 1 Welcome
- 2 Apologies
- 3 Confirmation of Minutes.
 - Confirm Minutes of the SFGC Public meeting held 5th February 2025.
- 4 Environment Southland Presentation on River Management
- 5 Notices of Motion.
 - Receive & approve Health & Safety Report
 - Waiau trust representative
 - Proposed Anglers Notice amendment
 - North Canterbury organisational model: feedback to NZC
 - Consider Draft 25-26 OWP
 - Consider Draft Budget
 - Window replacements Te Anau house-significantly above budget
- 6 Public Excluded
 - Update on Environment Court proceedings
- 7 Staff Report
- 8 Correspondence
- 9 Administration Reports.
 - Accounts paid & Direct Credit/Debit payment list since last meeting.
 - Licence sales progress
 - Budget to Actual progress
 - Journal
- 10 NZ Council update.
- 11 Items for the next agenda.
- 12 Close meeting

Unconfirmed Minutes of the Fish and Game NZ, Southland Region council meeting held at the Southland Fish and Game Offices, 17 Eye Street, Invercargill on 5th February 2024, commencing at 6.00pm.

Present:

Lindsay Withington (Chair)	Mike Turner
Lyndon Norman	Mike Hartstonge
Craig Horrell	David MacGregor
Dave Harris	

In attendance: Zane Moss (Manager), Cohen Stewart. Ben Febery, and Steve McCartney (minutes).

Members of the public: Nigel Juby (Auckland/Waikato F&G Chair)

1 Welcome:

The Chairman opened the meeting at 6.05pm and welcomed those in attendance.

2 Apologies:

Bruce Diprose, Cyril Gilroy

Resolved M Hartstonge/L Norman apologies be accepted. Carried.

3 Declarations of Interest:

The individual member declaration of conflicts of interest with any item on the agenda had been circulated to members before the start of the meeting.

Any conflicts were noted by the Chairman.

4 Confirmation of Minutes.

The minutes of the public meeting held 12th of December 2024 were considered.

Resolved L Withington/L Norman that the minutes of the public meeting held 12th December 2024 were taken as read and were a true and correct record. Carried.

Appointment of Councillors.

Cr Withington advised that the process undertaken by Council to appoint Dave MacGregor and Craig Horrell to the Council was incorrect. We were required to give notice in the daily newspaper that the council intended to appoint. Notice to appoint was subsequently made. Only one request for an election, so given costs, will proceed with appointments.

Resolved D Hartstonge/ M Turner to appoint Craig Horrell and Dave MacGregor to the Council. Carried.

5 Notices of Motion

Health & Safety Report.

The Council Health & Safety report for the period was attached to the agenda for consideration. All known hazards were listed in the Southland Health & Safety Plan. Cohen Stewart advised that new report format has been used to aid clarity.

Resolved M Turner/M Hartstonge: That the Health and Safety Report be received and accepted. Carried.

Gamebird Regulations for 2025 Season

Council required to reaffirm the regulations passed at the previous meeting o/a of the council appointment process as previously noted was undertaken incorrectly.

Mallards

The council has received hunter feedback regarding mallard bag limit and season length. Discussion around the table re effect on crops including seasonal crop timing variations regarding dispersal permits, introduction of a summer hunting season, effect on opening hunting weekend, perception that SFGC reacting to the effects of increased bird numbers present this season, avoidance if large changes in bag limits between seasons.

Resolved L Norman/M Hartstonge to investigate the introduction of a summer hunting season. Carried.

Resolved L Norman/M Hartstonge to increase bag limit to 25 per day all season with a season length of 2.5 Months. In favor 6, against 1, carried.

Paradise shelduck

Resolved Horrell/MacGregor That the council accept the staff recommendation with respect to season length and bag limits for Paradise shelduck for the 2025 season. Carried

Australasian Shoveler

Resolved MacGregor/Horrell That the council accept the staff recommendation with respect to season length and bag limits for Australasian shoveler for the 2025 season. Carried

Black Swan

Resolved Norman/MacGregor That the council accept the staff recommendation with respect to season length and bag limits for Black Swan for the 2025 season. Carried

Pukeko

Resolved Norman/Horrell That the council accept the staff recommendation with respect to season length and bag limits for Pukeko for the 2025 season. Carried

Upland Game

Health and Safety Report – March 2025

Work requiring health and safety planning – tailgate forms completed

- Ranging – sports fish
- MLC fish pass
- Drift diving
- Swan counts
- Boating
- CCD
- Brightwater macrophytes
- Weed spraying

H&S audits - internal

Completed audits:

Staff produced a tailgate form for Brightwater macrophyte removal.

Next audit areas:

Game ranging – approach and safety

Incidents/accidents/near misses/new hazards

No incidents, accidents or near misses reported.

Workplace accident register as of 30 August 2024:

Number of workplace injuries in 2024-2025 year	0
Number of workplace injuries in 2023-2024 year	1
Number of workplace injuries in 2022-2023 year	0
Number of workplace injuries in 2021-2022 year	1

Training in progress/completed

Seven boating induction forms completed for Landcare staff.

Confirmation from Landcare that all staff we physically fit and able to be on a vessel.

General discussions/actions

Staff purchased cut proof gloves for use during macrophyte trimming (with hand tools) on the Brightwater.

Staff recommendation

That this report be received.



Proposed Anglers Notice amendment

Anglers Notice

The Southland Fish & Game Council typically reviews angling regulations every three years, with the next full review scheduled for 2026. We avoid making frequent changes to the Anglers Notice to prevent confusing anglers. However, there is a redundant regulation that the Council could consider removing this year: the closed fishing season regulation within 100m of any part of the RealNZ Tourist Centre at Pearl Harbour, Manapouri.

This regulation is outdated, as it was originally implemented when trout were fed at this location as a tourist attraction. As trout are no longer fed there, the regulation is unnecessary. Furthermore, this area is close to the Manapouri township and could be a desirable fishing spot for local or holidaying anglers and, removing this outdated regulation would align with R3 objectives e.g., simplification of regulations.

Staff recommendation: Consult with RealNZ regarding the removal of the closed fishing season regulation within 100m of the RealNZ Tourist Centre at Pearl Harbour, Manapouri and, seek angler feedback on this proposed change.

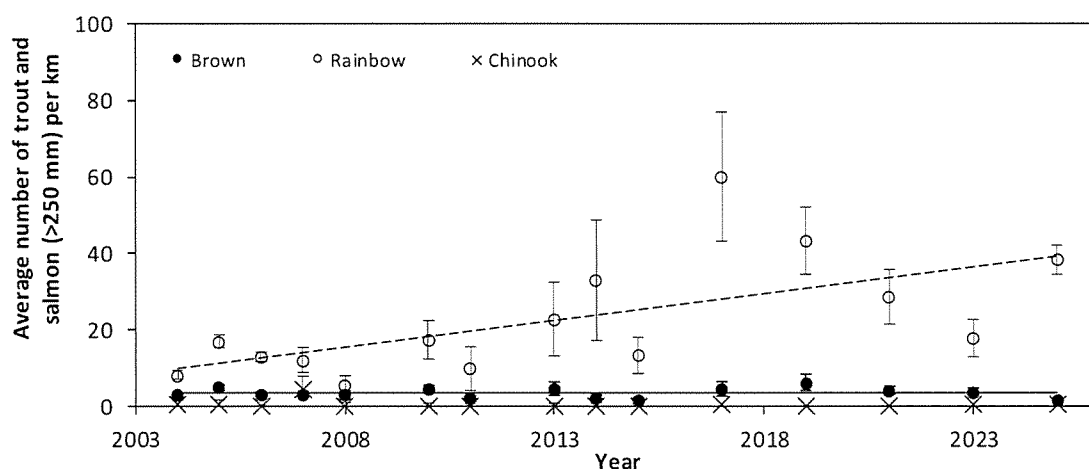
Southland Fish & Game Staff report – February-March 2025

1100 Species Management Projects

1112 Fisheries monitoring

Lower Mararoa

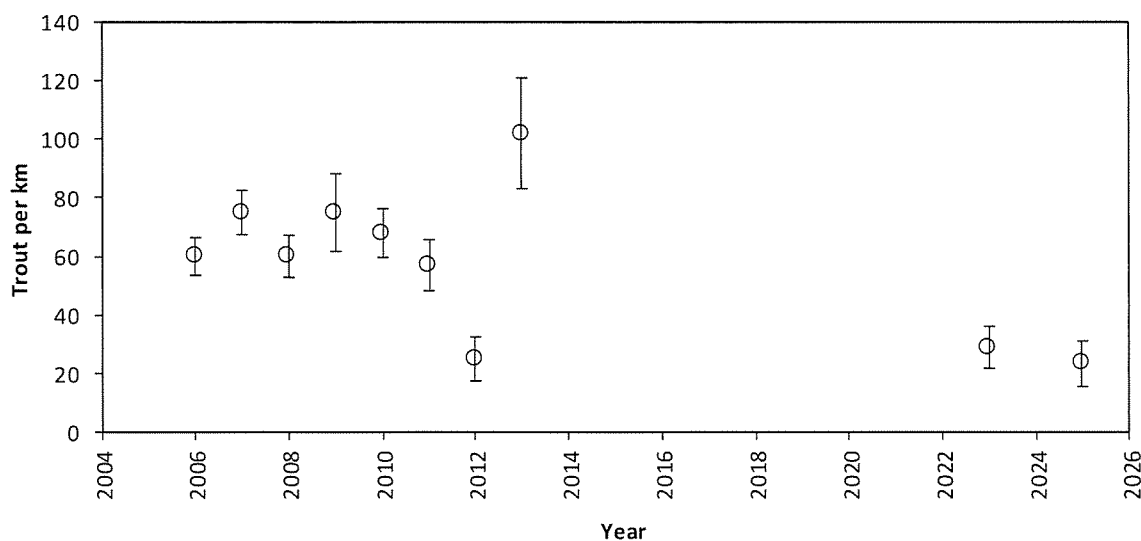
Staff completed a drift dive on the mid-Mararoa. On average, staff observed approximately 39 rainbow trout and two brown trout per km. One salmon was also seen. Trout populations in this reach appear relatively stable.



Upper and lower Waiau

Drift dives were conducted on both the upper and lower Waiau. However, rainfall the night before and overcast conditions affected visibility, reducing the reliability of the fish count in the upper Waiau. Despite this, staff noted that the fish appeared to be in good condition, though didymo was widespread on the rocks.

In the lower Waiau dive, staff recorded an average of 23 trout, primarily rainbow trout (see figure below). This section of the river was also heavily impacted by didymo.

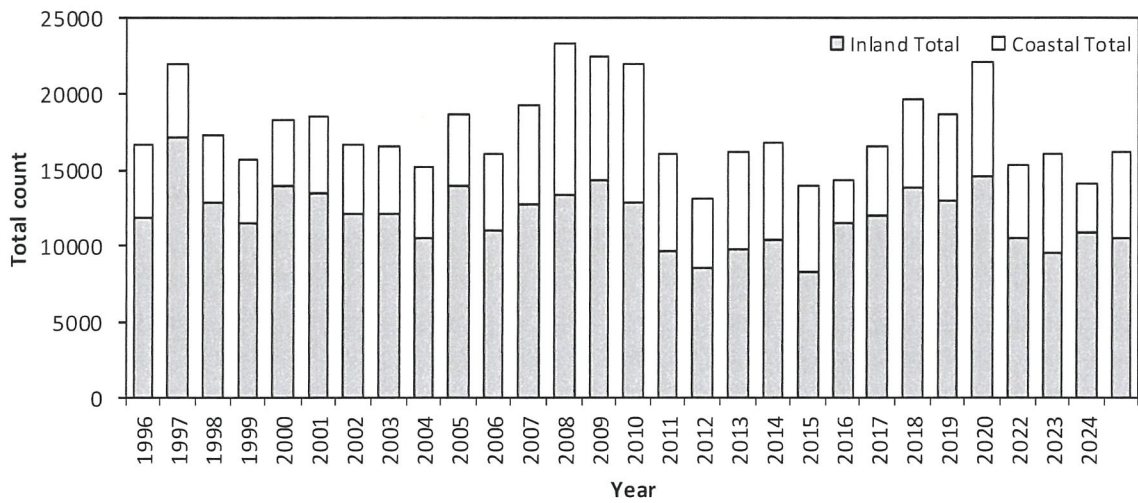




Bill Jarvie taking a fish count tally from Jacob Smyth, Cohen Stewart, Dwight Grieve and Roger Hodson (Waiau Trust).

1115 Shelduck and Black Swan Counts

Staff completed the annual paradise shelduck counts. Counts were in line with the long-term average, suggesting a stable population going into the 2025 game bird hunting season.



1161 Put and Take Fisheries

Approximately 2,000 rainbow trout fry were received from Otago F&G following their display at the Gore 'On the Fly' event. These 0+ fish were excess to Otago F&G's requirement for their kids fishing programme. The great majority were released to Lake Thomas and the remainder to McGregor Pond.



1172 Game Gazette

Southland staff worked with NZC staff in the production of the Game Gazette.

1181 Crop protection

To mitigate crop damage, staff have issued permits to disturb game birds preying on crops.

1200 Habitat Protection/ Management

1211 RMA - Plan, policy, pSWALP

Proposed Southland Water and Land Plan (pSWLP) appeals

Two appeals in relation to Rules 24 and 78 of the pSWLP remain unresolved. These are discussed separately below.

Rule 24 – Incidental discharges from farming activities

The application

Environment Southland applied for a partial stay of proceedings related to rule 24 of the pSWLP, pending the passage of the Resource Management (Consenting and Other System Changes) Amendment Bill ('the Bill'). If enacted, the Bill would amend s 70 of the RMA, which applies to permitted activities for discharges, including diffuse discharges from land use activities.

Background to the application

Rule 24 concerns incidental discharges from farming activities.

Forest & Bird and Fish & Game's Environment Court appeals sought to strengthen rule 24 by adding criteria that imposed stricter conditions on farming-related discharges before they can be classified as permitted activities. They argued that, under section 70 of the RMA, a rule permitting contaminant discharges can only be included in a plan if the court is satisfied it will not significantly harm aquatic life.

The Environment Court reviewed legal arguments on s 70 and ruled that it lacked jurisdiction to approve Rule 24 as proposed in the pSWLP. The court was not satisfied that incidental discharges from farming activities were unlikely to cause significant harm to aquatic life.

In its fifth interim decision, the Environment Court considered legal arguments on the interpretation of s 70 and ruled that it lacked jurisdiction to approve Rule 24 as proposed in the pSWLP. The court was not satisfied that the discharges were unlikely to cause significant harm to aquatic life.

Federated Farmers, Fonterra and DairyNZ, and Environment Southland appealed this decision to the High Court, which ruled:

- **Federated Farmers** had partial success on a narrow appeal point regarding the scope of decisions on Rule 24 appeals.
- **Fonterra and DairyNZ** were unsuccessful. The High Court upheld the Environment Court's finding that s 70 applies to non-point source discharges, including those covered by Rule 24.
- **Environment Southland** was also unsuccessful. The High Court ruled that simply repeating s 70(1)(c)–(g) in Rule 24 was insufficient and that the Environment Court was entitled to hear evidence to assess whether Rule 24 met s 70 requirements.

Environment Southland then appealed to the Court of Appeal, which upheld the High Court's ruling in October 2024. The Court of Appeal confirmed that s 70 requirements must be met before including a rule in a plan and that the Environment Court had the right to hear further evidence on the matter. As a result, the Environment Court's interpretation of section 70 in its fifth interim decision remains in effect.

Consideration of the application

The application addressed the management of Rule 24 appeals on the pSWLP, which had been on hold pending appeals to the High Court and later the Court of Appeal regarding the Environment Court's fifth interim decision (see above). The application sought to put proceedings again on hold pending the Bill becoming law.

The application was supported by Federated Farmers but opposed by Forest and Bird. Other parties, including Fish & Game, stated they did not wish to participate and would abide by the court's decision.

The decision

The Court found that, due to the state of Southland waterways, resolving Rule 24 is a high priority. However, it decided that in this rare case, for pragmatic reasons (including imminent and clearly defined changes to s 70) it was in the interest of justice to adjourn the proceedings until s 70 was changed.

The court ordered:

1. The Rule 24 proceedings were adjourned until the bill becomes law.

2. Within two weeks of the Bill becoming law, Environment Southland must consult with the parties and file a memorandum outlining a proposed timeline and next steps for the proceedings.

The Court also noted that if the Bill was passed by mid-year as expected, a timetable for exchanging evidence could be set between the Bill's passage and two-week hearing in October 2025. However, this can only be confirmed once the Bill is passed.

Rule 78 – weed and fine sediment removal

Fish & Game staff have joined additional workshops as part of the Weed and Sediment Removal Working Group, set up by Environment Southland. The group aims to resolve ongoing appeals on Rule 78, which deals with weed and sediment removal from modified waterways and drains.

The group is working on an alternative rule framework for weed and sediment removal, which could be presented as a separate plan change to the pSWLP since Plan Change Tuatahi is on hold. Progress is being made on the alternative drafting.

1212 RMA - Consents evaluation

Take and use of water	Instream works	Gravel / Rock
Premier Dairies Ltd – Application for water permit to take and use surface water from the mid-Oreti River for pastoral and crop irrigation. Primary take – 137l/s, 10,800m ³ /day, and 945,000m ³ /year. Secondary take for water storage – 360l/s, 31,104m ³ /day, and 443,880m ³ /year.	Southland District Council - Erosion protection, Aparima River to protect former Otautau township municipal dump site. Environment Southland Retrospective consent for dry cut in the upper Aparima River for erosion control and facilitation of flood bank repair. Rayonier Matariki Forests – Application for harvest associated with Longwoods Forest: 1 - Land use to disturb the bed of an unnamed tributary by installing and using a 'grizzly bar' slash barrier; and 2 - Discharge permit for releasing woody debris and sediment while extracting trees using a hauler (aerial cable system).	McGregor Concrete – Application to relocate gravel processing and stock piling site at Lumsden, including water take and flood bank relocation. K. J. Sutherland - Consent of 5 years duration to extract up to 140,000m ³ of gravel by beach skimming and shaping of the dry river bed on the true left bank of the lower Waiau River. McGregor Concrete via a consultant is working towards developing a long term gravel extraction operation on the Mararoa floodway. Staff have been involved with onsite assessments of options.

1232 Pond/wetland identification and advice

It has been a busy two months in regard to wetland construction. Staff have supervised construction of wetlands at Wards' (GBHT, three wetlands), Buckingham's (GBHT, two wetlands), van Rooijen's, Elder's (GBHT), Wilson's (GBHT) and Blom's.



2.6 hectares of wetlands funded by the GBHT

Staff have surveyed and/or provided advice on several other sites.

We are working on another significant wetland (1.5ha) and are managing an application to Thriving Southland to fund its construction.

1241 Waiau River hydro power effects (periphyton, WWP)

Periphyton surveys

Eight Waiau River periphyton surveys have been completed. Following low periphyton cover into December, the three surveys completed from January 31 to March 6 saw the river at the 'Red' level, with cover (principally didymo) increasing significantly over that period. The continued low level of Lake Manapouri meant that it was not possible for Meridian Energy to provide flushing flows of effective magnitude.

Meridian Energy consulted Fish and Game ahead of the reduction in flow of the Upper Waiau below the 'normal minimum' of 115 cumecs, potentially down to 80 cumecs. This reduction began on February 22 with the flow in the vicinity of 90 cumecs until the inflows to and the level of Lake Te Anau increased with rain on March 17. As of March 19, the upper Waiau was at 115 cumecs.

Landcare -lake vegetation monitoring

Boat transport and field assistance were provided to Landcare for their 5-yearly lake-edge vegetation transect surveys that they conduct for Meridian Energy. This was on lakes Te Anau, Manapouri, and Hauroko.



1242 MLC Fish Pass

Continued reduction in the MLC HWL has required all inflow control plates to be removed to maintain flow through the fish pass. This is an 'as designed' action for situations we have now with very low lake levels.

1300 Participation

1311 Maintain, protect and enhance access

LINZ

Staff have liaised with staff from LINZ, who have provided valuable information regarding some LINZ leases and clarified their approach on public access to LINZ riverbed (hydro parcel) land. It was encouraging to hear that LINZ recognises the importance of public access to rivers, and that LINZ leases reflect this commitment.

Brightwater Spring

Staff spent a day spraying gorse and trimming back some problem macrophytes on the Brightwater Spring.



Upper Maitava

Due to some issues relating to angler behavior on the upper Maitava, new signage is planned with etiquette information and to highlight access routes.

Signage

Many landowners who adjoin property where access signs have been stolen have been spoken to in preparation for signage reinstatement. New signs have been ordered which now include information informing users of access status e.g., "Legal Public access to river" and "Access generously provided by farmer". These signs will be installed in Northern Southland in continued consultation with adjoining landowners.

Access signage has been reinstalled on Pamu farms in Mavora/Centre Hill at their request.

1313 Monowai jetty proposal

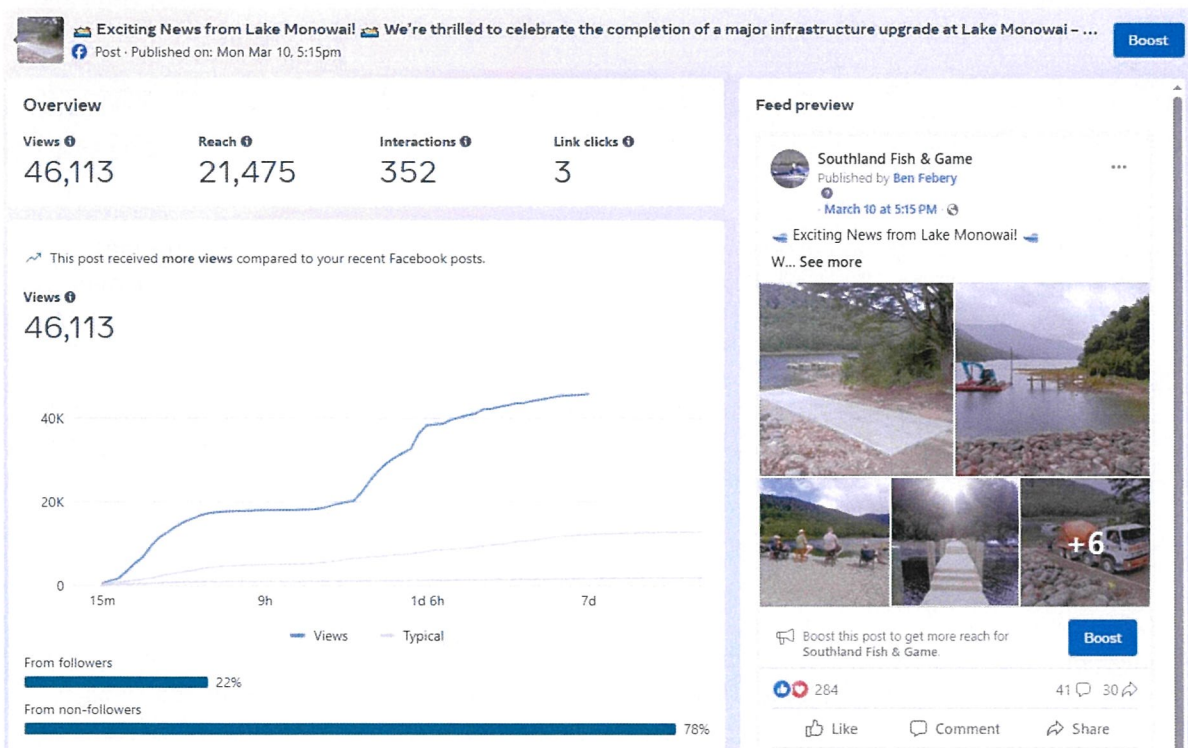
It is complete! After many years and countless conversations, it is done. The Lake Monowai jetty and boat ramp project has been highly rewarding and garnered public support from its inception. The weather, and lake level window, held during the critical three weeks that we needed; two weeks to construct the jetty, and another week for the boat ramp pour and cure.

The contractors involved all completed their tasks well. Te Anau Earthworks battled the boulders to set the piles, but Paddy Dawson (builder) was able to adapt the plans to suit.

Without support from the business, farming and angling community, through doing work at cost, below margin, and/or donating time, money or farm machinery, this project would not have been nearly as feasible.

1332 Promote fish/hunt magazine, internet & print

Staff have created content for the e-zine ReelLife and produced relevant content for the Southland Fish & Game Facebook page. Content relating to the Monowai jetty and boat ramp received high levels of positive engagement (46,000 views, 350 interactions).



1334 R3

Events

In late February, staff attended the Gore 'On the Fly' event. This community event was organised by the Gore District Council and celebrates trout fishing. Foot traffic to the Fish & Game stand was steady throughout the day, offering an excellent opportunity to share information and engage with the community. It was great to have support from Otago Fish & Game, who provided staff support, a gazebo, fish tanker with rainbow trout, and the Backyard Trout fishing game.



Some youngsters having a go at the Backyard Trout fishing game at the 'On the Fly' event in Gore.

Southland Women's Fly Fishing Sessions

These sessions were held in conjunction with the NZ Fly Fishing Academy. We had 15 registrations across both days and the feedback afterwards was very positive. Kristina was very appreciative of our practical support and backing.

Wellbeing study

Our quantitative study investigating the relationship between trout fishing participation and wellbeing and mental health received a positive review following its submission to the journal *Leisure Sciences*. We are currently making edits in preparation for resubmission.

1400 Communication

1422 Communication with Iwi

Staff have been involved in ongoing meetings with iwi, Great South and various Department of Conservation staff regarding the future of the "Wildlife Park". Council has previously invited mana whenua to investigate the potential for a commercially-supported development on the site that reflects iwi associations with the area and taonga species. The associated expectation is that Fish & Game values, with respect to freshwater habitat values and trout, are also highlighted. Next step is an MOU between the various parties.

1423 Communication with farmers

Staff attended a 'Fishing for Farmers' event in the Nokomai Gorge. This event was well attended and there are plans to have similar events in the future.

1426 Communication with anglers and hunters

Staff have received and replied to various email, Facebook, phone and office queries from anglers.

1452 Schools/youth organisations

St Peter's College Fly Fishing Club

Staff met with the St Peter's College fly fishing club supervisor and teachers to set goals for the group, compile an equipment list, and assist with a funding application to Active Southland. The application was successful, allowing the club to acquire ten new fly fishing combos and related accessories. Since then, the club supervisor has contacted Maruawai College (formerly Gore High School), where a new fly fishing club is tentatively forming.

1500 Compliance and enforcement

1511 River ranging duties

Staff have continued to have a strong compliance presence on Southland's rivers/lakes. Very few issues have been encountered.

1533 Fiordland Compliance and CCD

All sites requiring water and substrate sampling for didymo have now been completed, along with inspections of CCD stations throughout Fiordland. CCD education for angler, kayakers and holiday makers in the Fiordland area is ongoing.

Pressure sensitive fisheries

Staff have continued to monitor upper Oreti and Mataura beat usage and angler occupancy. In February, monitoring cameras were installed on six upper Mataura beats. Results are summarised below:

Resident v Non-Resident - Guided

- Upper Oreti – 116 anglers checked – 46% NR, 10% of anglers were guided
- Mataura (including Brightwater and Roberts) – 105 anglers checked – 58% NR, 19% were guided

NR % usage by month (number of anglers checked in brackets)

Oreti

Oct – 14% (21)

Nov – 56% (25)

Dec – 45% (28)

Jan – 61% (29)

Feb – 46% (13)

Mataura

Oct – 47% (17)

Nov – 66% (32)

Dec – 65% (17)

Jan – 36% (22)

Feb – 76% (17)

Upper Oreti beat usage – % non-resident angler

- Mount Nicolas Bridge – Nov 46%, Dec 68%, Jan 58%, Feb 43%
- Ashton Burn – Nov 57%, Dec 70%, Jan 65%, Feb 54%
- Oreti Hut – Nov 54%, Dec 60%, Jan 58%, Feb 39%
- Pattersons Bush – Nov 35%, Dec 30%, Jan 46%, Feb 44%
- Lincoln Hill – Nov 62%, Dec 55%, Jan 86%, Feb 63%
- Three Kings – Nov 58%, Dec 52%, Jan 61%, Feb 75%
- Windy Hill – Nov 42%, Dec 35%, Jan 58%, Feb 57%
- Gravel Pit – Nov 38%, Dec 26%, Jan 58%, Feb 61%
- Windley – Nov 38%, Dec 19%, Jan 55%, Feb 43%
- Windley River – Nov 19%, Dec 16%, Jan 10%, Feb 11%
- So Big – Nov 35%, Dec 10%, Jan 26%, Feb (Camera fail)

1800 Planning and reporting

Work on next years' OWP and draft budget has been completed.

11 March 2025



Southland Fish and Game Council

By email: southland@fishandgame.org.nz

Seeking Solutions to Crop Damage by Mallard Ducks in Southland

Firstly, Federated Farmers acknowledges the importance of maintaining a healthy population of mallard ducks for Southland game bird shooters. We also note that many of our members, in addition to allowing shooting on their properties, are themselves active game bird hunters.

However, many farmers now face significant crop destruction due to a surge in mallard duck numbers. This increase has been partly driven by changes in farming practices—particularly the growth of the dairy industry, which provides ideal habitats and year-round food sources for ducks.

The destruction of crops is causing hardship for farmers, who express frustration over the lack of practical and effective tools to address the problem. They are seeking to cooperate with Fish & Game Southland to develop and implement a solution.

While the current system of out-of-season permits to scare or shoot ducks worked well when populations were low, it is now inadequate due to the much larger duck numbers. The key issues are:

- **Proof of damage requirement** – Permits require proof of damage, but by the time this is provided, entire crops may already be devastated due to the sheer size of the flocks.
- **Processing delays** – Permit processing times are often too long, meaning the damage is done before the permit is issued.
- **Ineffectiveness of scaring** – With such large populations, scaring is ineffective, as it simply shifts the problem to neighbouring farms or results in replacement by other birds.

Federated Farmers considers that, in the long term, the overall mallard duck population in the region needs to be reduced to a more sustainable level — one that minimizes crop damage while still supporting a viable annual harvest. This could be achieved by:

- **Setting higher bag limits** throughout the entire season, not just opening weekend, and
- **Introducing summer shooting weekends** in areas with the highest population densities.

To address the immediate issue of crop destruction, we propose the following changes to the out-of-season permits system:

- Issuing permits in advance of crop damage.
- Streamlining the permit application process by making renewals easier in subsequent seasons.
- Making the default permit a permit to shoot rather than to disturb.

Federated Farmers look forward to working with you to find a mutually beneficial solution to this problem and we can be contacted via Jason Herrick at 027 282 1830 or southland.president@gmail.com

Yours sincerely,

Jason Herrick
Provincial President Southland Federated Farmers

CC to: Minister for Hunting and Fishing Hon James Meager J.Meager@ministers.govt.nz
Chief Executive Fish and Game NZ: Corina Jordan cjordan@fishandgame.org.nz

Comment on the potential impacts of extending the Designated Waters (DW) licence to the upper Mataura and Waikaia rivers

Prof. Brent Lovelock & Dr Stu Hayes
Centre for Recreation Research
Department of Tourism
University of Otago
PO Box 56
DUNEDIN 9054

Introduction and background

This document is provided upon the request of Fish and Game New Zealand Southland Region to outline and discuss the potential impacts of extending the Designated Waters (DW) licence to include the upper Mataura and Waikaia rivers. The DW licence is dual priced whereby non-resident (NR) anglers pay more and are subjected to greater restrictions, than resident anglers. The document discusses the potential impact of the DW licence and the associated surcharges for NR tourist anglers and their intentions to visit (or revisit) New Zealand and Northern Southland.

Before specifically discussing the potential impacts of the proposed extension to the DW licence, it is useful to provide a more general explanation of what dual pricing is, how it has been implemented elsewhere, including in New Zealand, and its potential outcomes, with a focus on how it affects visitor demand. The proposed DW designation will potentially impact NR anglers in two ways: through imposing a greater cost to their access to these waters; and through possibly reducing the amount of time that they can spend fishing these waters. In the following sections we introduce relevant research that relates to both the regulatory and (dual) pricing aspects of the DW designation. We draw upon broader research into tourist and recreational fees, for example for access to national parks, as well as more specific angling and hunting licence fee research.

Dual pricing

Dual pricing is a segment-based pricing system where two prices exist for two different segments (of customers/visitors) for the same offering.¹ This is also referred to as differential or discriminatory pricing, or segment-based pricing. For the purposes of this document we use the term dual pricing. Dual pricing is used in many destinations around the world for visitor access to natural or cultural heritage sites or recreational access to natural resources.¹

¹ At the Taj Mahal there is a 3500% difference between the price paid by a resident and an international visitor. Other examples include the Galapagos Islands (1666% difference); Persepolis (Iran) (2400% difference); Borobudur (Indonesia) (666% difference); Victoria Falls (Zimbabwe) (428% difference); and Kruger National Park (400% difference) (Apollo et al 2014; DoC 2024).

Actual vs stated responses and the Adjustment Period

Two further findings from the research in this field are relevant here. The first is that recreationists tend to overstate their propensity to change their behaviour in response to increases in pricing or changes to regulations. This has been found to be the case in anglers' responses to changes to fishery management: "A statement that the respondent intends to do something (like quit fishing or boycott a destination) is not a perfect predictor of that respondent's behaviour".^{xxv}

Second, while there *may* be an initial decline in demand - especially with the imposition of a new visitor fee or a substantial increase in a visitor fee this is likely to be temporary.^{xxvi} Research in this field demonstrates that after an initial period of time (described as the 'visitor adjustment period') visitors will adjust and accept the new price as the 'reference price' and regard it as fair.^{xxvii} Furthermore, the imposition of visitor fees appears to not negatively affect visitor satisfaction.^{xxviii}

Angling licence fees, WTP and satisfaction

In relation to angling, licence price alone is not the sole or most important determinant of angler satisfaction and licence repurchase intentions. This point is routinely echoed in studies of the elasticity of demand and WTP for hunting/fishing licences, where a number of variables have been found to influence recreationists' price perceptions, purchase behaviour, or WTP. These include payment history, past use, level of involvement in and personal attachment to the activity, knowledge of how the fee will be used, and expected level of service.^{xxix xxx xxxi}

Other factors (e.g. perceived poor quality of the fishing experience, crowding, lack of solitude, etc.) are seen as being more important and likely to play a role in influencing whether or not anglers will choose to fish the same location in the future. In summary, it has been well-established that WTP for a fishing licence is associated not just with licence cost but with fishing quality and satisfaction.^{xxvi} Increases to licence costs that are clearly aimed to maintain the quality of the angling resource and to help assure a high-quality uncrowded fishing experience (i.e. contribute to higher angler satisfaction) will likely have a relatively low effect on demand.

Research has also shown that angling effort is largely resilient to changes in angling regulations that are aimed to reduce fishing or to protect the fishing resource. This is referred to as an inelastic response in angling effort to such policy interventions.^{xxii} Such inelastic responses to changes in regulations or other attributes of the fishing experience (e.g. licence cost) are most likely to occur when few substitute species or locations are available but can vary across anglers and with context. The establishment of regulations that differentially affect angler segments may force those anglers into site substitution. Some studies show that site substitution is unlikely to occur, as anglers may not perceive other sites as substitutes e.g. having poorer fishing conditions or lower fish populations. Conversely, other studies show that constrained anglers may substitute sites. Site (place) attachment (to the current site) and availability of substitute sites are important in angler decisions on moving from one site to another.^{xxxiii xxxiv xxxv xxxvi xxxvii}

Dual pricing in New Zealand

Periodically the subject of dual pricing arises in New Zealand in relation to charging non-residents access fees (or higher access fees) to nature-based recreational resources, for example in Public Conservation Lands. There have been two main reasons advocated for such an approach: to generate additional revenues for conservation management and/or to help relieve congestion in natural

Designated Waters licence

In 2023 Fish & Game New Zealand (F&G) introduced the Designated Waters Licence to replace the Backcountry Endorsement. Existing Designated Waters are ‘pressure sensitive fisheries’ in that they are highly popular due to having clear water, excellent sight fishing, larger than average fish, and high scenic value (e.g., wilderness/backcountry setting) but where also this popularity – or pressure – can adversely affect the angling experience, thus creating an unsustainable context. To help address this, the Designated Waters Licence was introduced to reduce crowding on pressure sensitive fisheries.³ In total these waters comprise fewer than 2% of available fisheries. The move to introduce the DW licence was based in part on consultation undertaken by Fish and Game New Zealand (F&G) in March 2023 (Fish and Game New Zealand, 2023) which sought feedback from resident and non-resident (NR) licence holders and other stakeholder groups on the levels of: 1) perceived crowding; and 2) agreement with the proposed DW licence.^{xl}

The DW licence costs NR anglers \$40 per day, with a cap of five licences per region, per season. For resident anglers, they can buy a full season DW licence for \$5 and fish as much as they want. In addition to the rivers already requiring a DW licence, Southland F&G wish to extend the DW licence to include the upper Matura and Waikaia rivers during the peak months of February and March.

Profiling NR anglers

Non-resident, or tourist anglers, share some common characteristics. They are generally experienced and highly skilled, with a very high proportion having over 20 years of experience and identifying as being either of intermediate or advanced skill level. NR anglers also fish regularly, with almost 90% fishing every year. They are also regular visitors, with a very high proportion visiting New Zealand at least once a year. Overall, most NR anglers are middle to high income earners (72%) and many choose not to use fishing guides whilst in New Zealand (55%).^{xli}

When they visit New Zealand, they like to fish a variety of different water types, but most of those that visit Southland prefer lowland rivers. Of particular relevance to the proposed extension of the DW licence to include the upper Matura and Waikaia, neither of these rivers are technically classed as ‘lowland’. They are instead deemed as upland rivers, a category between lowland and backcountry. However, both rivers tend to be captured under the lowland river definition.

When visiting New Zealand, the largest proportion of NR anglers stay between 1 – 2 weeks and spend a considerable amount of this time fishing. Given that many NR anglers stay for between 1 – 2 weeks, even those wishing to fish Designated Waters exclusively during their visit would likely not be excessively impacted by the cap of five DW licences per region, per season (cost notwithstanding). As the map below shows (Figure 1), the existing Designated Waters in Southland and Otago are clustered fairly closely to one another across these two regions. Because these rivers are distributed among two regions, those wishing to fish Designated Waters exclusively during their visit would be eligible for ten DW licences.

³ Southland Designated Waters: Upper Oreti River, Otago Designated Waters: Greenstone River, Caples River, Dingle Burn, Upper Lochy River, Upper Pomahaka, Wilkin River, Young River, Hunter River, and Nevis River. There are several other Designated Waters around Aotearoa New Zealand (see [Designated Waters licence - Fish & Game](#)).

Generally speaking, when it comes to choosing an international destination to go fishing, a smaller proportion of NR anglers were influenced by licence price as compared to those that are not. Our research found that only about one-third (32.7%) of respondents displayed sensitivity to licence price, indicated by it being ‘very influential’ or ‘somewhat influential’ in their destination choice. In contrast, 44% were not price sensitive, indicated by price being ‘not very influential’ or of ‘no influence’ at all.

Australian anglers in particular appeared to be a segment that *is* more sensitive to price. Australian anglers are an important inbound market representing around 50% of NR anglers to New Zealand. In our study, we found that Australian nationality was negatively associated with the perception of licence value, while being a US citizen was positively associated. Those respondents who were likely to perceive the licence as having poor value could be generalised as more likely to be from Australia, having fished overseas before, but of a casual or beginner skill level, using spinning, trolling or bait fishing, and spending relatively few days fishing in New Zealand. Our data indicates that tourist anglers from other key originating countries – notably US and UK – are likely to be much less sensitive to changes in price. It is also fair to say, based on the research that we have conducted, that tourist anglers from Australia appear to be the most vocal when it comes to sharing concerns.

Following the introduction of the NR licence, our research highlighted a certain level of opposition. Again, most of this opposition came from Australian anglers who were opposed to the increases on the basis of the close bilateral relationship between NZ and Australia (e.g. “We’re Australians, we’re not bloody foreigners. We’re another island, we’re the West Island in case you haven’t heard. We’ve got a free trade agreement”). On the popular Australian fishing forum, *Flylife*, the introduction of the NR licence was even considered to represent “a breach of human rights” (Flylife, 2014).^{4 xlii}

However, even despite such vehement sentiments, some of which included threats from anglers to stop visiting New Zealand, NR licence sales continued to rise year-on-year up until the Covid-19 pandemic and the subsequent closure of the borders. Tables 1 and 2 below show NR licence sales (whole season and one-day) for the four seasons between 2015/16 and 2018/19.

Table 1: NR licence sales New Zealand

Season	NR whole season licence sales	NR one-day licence sales
2015/16	5,666	16,103
2016/17	6,145	18,797
2017/18	6,508	19,507
2018/19	7,153	12,887 ⁵

⁴ This sort of sentiment was echoed in 2018. In response to an increase in hut charges for international visitors, an Australian woman took a complaint to the NZ Human Rights Commission (see [Australian tourist complains to UN over New Zealand’s tramping hut fees](#). That complaint was later rejected.

⁵ The change in day licence and full-season licence sales in 2018/19 is likely attributed to the introduction of the NR day licence category. This increased the cost of a day licence for NR anglers from \$20 to \$34, but the full-season NR licence remained roughly the same (\$169 compared to \$165 in the 2017/18 season). As such, many anglers found it more economical to buy a full-season licence rather than multiple day licences.

South America For anglers wishing to fish in the United States, dual pricing is commonly applied to non-resident anglers there, and at a substantially higher cost than New Zealand.^{xliv} ⁶

The upper Mataura context

As part of our 2018 study into angler displacement, we explored attitudes to the hypothetical introduction of management mechanisms to control crowding on various Southland and Otago rivers, including the upper Mataura. We found that NR anglers, as well as visiting anglers from Otago, were the group *most in favour* of the introduction of management mechanisms (46% for each group). One possible reason for this could be that overseas visitors may wish to have some guarantee of non-crowded waters, thereby justifying their substantial investment into a trip to New Zealand to fish waters like the upper Mataura.^{xlv}

In the same study, NR anglers were also the group *most prepared to pay an additional administration fee* if management mechanisms to control crowding were introduced (37%, compared with 15% for local anglers). One reason could be that such a fee could be justifiably absorbed within the overall cost of a fishing trip to New Zealand, particularly if (as noted above) such a fee helps guarantee an uncrowded angling experience. However, it should be noted that a reasonable proportion of NR anglers (21%) claimed that they would choose to not fish the river if mechanisms/fees were introduced.

It is also important to consider the likelihood that the extension of the DW licence to include the upper Mataura might shift some of the angling tourist spend to the shoulder season and thus provide benefit to accommodation providers, guides, and other related businesses in traditionally quieter periods. However, our earlier study on displacement suggests that this would be unlikely. In that research, we found that most NR anglers who fished the upper Mataura chose to fish the mid/late season and had always done so. They appeared disinclined to fish the river in the shoulder season. That said, it is unclear whether this trend would continue with the extension of the DW licence. Indeed, the introduction of the DW and associated surcharge has the potential to shift some demand to earlier or later in the season.

Peak season alternatives to the upper Mataura and Waikaia rivers

The upper Mataura and Waikaia rivers are popular with NR anglers. However, if the DW licence were to be expanded to include these rivers and if, because of that, tourist anglers cannot gain access freely to the upper Mataura and/or Waikaia (e.g., because they are unwilling or unable to purchase a DW licence), there are alternative fisheries offering a similar quality fishing experience in Southland without any access restrictions. These fisheries include, but are not limited to, the following:

- Mid and upper-Aparima
- Mid-Oreti
- Waimea
- Otamita

⁶ In the US non-residents (from out-of-state) pay more for hunting and fishing licences. e.g. Arkansas charges US\$35 for a 'Combination Sportsman's License' (to hunt and to fish), whereas a non-resident must pay up to US\$400 for a licence for each individual hunted species. For a comprehensive list of resident and non-resident fishing licence fees in US states see <https://www.findlaw.com/state/state-fish-and-game-laws/fishing-laws-by-state-findlaw.html>

6. It is commonly the case that recreational users will declare that they will change their behaviour (e.g. anglers say they will fish elsewhere). However, this is often an initial response and increases in price and/or changes in regulations are generally accepted after an adjustment period.
7. Substitutability for the two proposed DW is high regionally, but low nationally and internationally. The quality and reputation of the angling resource in Northern Southland, and the availability of substitute waters in the region that are not DW suggests that the revisit of NR anglers to the Northern Southland region is unlikely to be impacted by the DW extension to the upper Maitai and Waikato rivers.
8. Based upon the above points, fishing related businesses in Northern Southland are unlikely to be negatively impacted by the extension of DW status to the upper Maitai and Waikato rivers. In the unlikely case that a small segment of Australian anglers are displaced, demand from other NR anglers (including those Australian anglers who do *not* show a price sensitivity to licence fees) should be sufficient to maintain a sustainable fisheries-based local economy.
9. The practice of dual pricing is now becoming more common in New Zealand. For example, NR users of the Great Walks pay double the price that New Zealanders pay. There is current discussion of a charge for NR access more broadly to Public Conservation Land. It is likely that the segment of NR anglers that are most resistant to new regulations and charges will become progressively 'socialised' into the dual-pricing regulatory approach.

Afterword -mitigating the impact of DW designation

It is important not to dismiss the potentially damaging impacts of dual pricing on perceptions of fairness- especially among the segment of price-sensitive NR Australian anglers. Generally, the presence of two different prices for the same offering is a precursor to a perception of price unfairness among the price-disadvantaged segment.^{xvii} While many studies have demonstrated that non-residents often have a higher WTP for visiting tourist sites, and that managers may be justified in charging a higher price for non-residents, few studies have considered the impact of dual pricing on the price-disadvantaged (those who pay more) – for example, their perceptions of price unfairness^{xviii}.

Further, perceptions of unfairness may differ across visitors; research has found that culture and/or nationality play an important role in the formation of perceived price and fairness.^{xviii} This suggests that some non-residents will feel the 'unfairness' more keenly than others, and that not all non-residents will have a high WTP. This appears to be the case with Australian NR anglers who demonstrate a higher price sensitivity than other NR anglers.

Messaging around dual pricing

Successful adoption of dual pricing practices is dependent on understanding the factors that influence the price sensitivity of different consumer segments. Researchers have suggested that dual pricing should be avoided unless justified appropriately, given its potential to impact tourist perceptions negatively; price discrimination can elicit negative behaviours unless reasonable explanations for differential pricing are provided.^{xlix}

Recreational managers (e.g., F&G) need to offer clear rationale to help mitigate adverse reactions to dual pricing; for example, making it clear that additional revenue will be invested in initiatives aimed

-
- ^{vii} Sharifi-Tehrani, M., Verbič, M., & Chung, J. Y. (2013). An analysis of adopting dual pricing for museums: The case of the national museum of Iran. *Annals of Tourism Research*, 43, 58-80.
- ^{viii} Humavindu, M. N. (2002). *Economics without markets: Policy inferences from nature-based tourism studies in Namibia*. DEA Research Discussion Paper Number 49, Ministry of Environment and Tourism, Windhoek, Namibia.
- ^{ix} Kirchner, C. H., Sakko, A., & Barnes, J. I. (2000). Estimation of the economic value of the Namibian recreational rock-and-surf fishery. *South African Journal of Marine Science*, 22, 17-25.
- ^x Richardson, M. (2002a) Some simple economics of ecotourism. NZ Treasury Guest Lecture November 26th 2002.
- ^{xi} Richardson, M. (2002b). Quality and congestion in environmental goods: the road to the Wangapeka. *Journal of Environmental Economics and Management*, 43(3), 477-496.
- ^{xii} Smith, E. A., Knollenberg, W., Seekamp, E., Lee, K. J., & Savage, A. (2024). Gateway community stakeholders' perceived impacts of protected area management actions: The case of North Carolina (US) state parks. *Journal of Outdoor Recreation and Tourism*, 47, 100792.
- ^{xiii} Spain, W., Reiter, D., Blahna, D., & Burr, S. (2007). Recreational Water Use Issues and Regional Planning on Utah's Lakes and Reservoirs. *Logan, UT: Institute for Outdoor Recreation and Tourism, Utah State University*.
- ^{xiv} Adedoyin, F. F., Seetaram, N., Disegna, M., & Filis, G. (2023). The effect of tourism taxation on international arrivals to a small tourism-dependent economy. *Journal of Travel Research*, 62(1), 135-153.
- ^{xv} Forsyth, P., Dwyer, L., Spurr, R., & Pham, T. (2014). The impacts of Australia's departure tax: Tourism versus the economy?. *Tourism Management*, 40, 126-136.
- ^{xvi} Sheng, Li, and Tsui Yanming. 2009. "Taxing Tourism: Enhancing or Reducing Welfare?" *Journal of Sustainable Tourism* 17 (5): 627-35.
- ^{xvii} Melstrom, R. T. (2018). How do license prices affect participation in recreational fishing? Evidence from Pennsylvania. *Human dimensions of wildlife*, 23(3), 273-283.
- ^{xviii} Teisl, M. F., Boyle, K. J., & Record Jr, R. E. (1999). License-sales revenues: understanding angler and hunter reactions to changes in license prices. *Human Dimensions of Wildlife*, 4(4), 1-17.
- ^{xix} Pang, A. (2024). Evaluating the demand for and price elasticity of state hunting licenses in the United States using panel data. *Human Dimensions of Wildlife*, 1-13.
- ^{xx} Sun, L., van Kooten, G. C., & Voss, G. M. (2004). Demand for wild- life hunting in British Columbia. Working paper 2004-09 Resource Economics and Policy Analysis (REPA) Research Group Department of Economics, University of Victoria. Retrieved from <https://web.uvic.ca/~repa/publications/REPA%20working%20papers/WorkingPaper2004-09.pdf>

^{xxxvi} Shelby, B., & Vaske, J. J. (1991). Resource and activity substitutes for recreational salmon fishing in New Zealand. *Leisure Sciences*, 13(1), 21-32.

^{xxxvii} Scrogin, D., Boyle, K., Parsons, G., & Plantinga, A. J. (2004). Effects of regulations on expected catch, expected harvest, and site choice of recreational anglers. *American Journal of Agricultural Economics*, 86(4), 963-974.

^{xxxviii} Department of Conservation (2024) *Exploring charging for access to some public conservation land. Discussion document*. <https://www.doc.govt.nz/globalassets/documents/getting-involved/consultations/2024/access-charging/exploring-charging-for-access-to-some-public-conservation-land-discussion-document.pdf>

^{xxxix} Angus and Associates (2020) *Great walks differential pricing trial. 2019/2020 season evaluation Mid-season report*. <https://www.doc.govt.nz/globalassets/documents/about-doc/news/issues/great-walks-differential-pricing-trial-evaluation-report-2019-20.pdf>

^{xl} Fish and Game New Zealand. (2023). *Designated Waters Licence Summary of Feedback and Response*. Retrieved from <https://www.fishandgame.org.nz/assets/DMS/About-us/FG-Regional-Councils/North-Canterbury/Council-Downloads/2023/Fish-and-Game-Licence-Feedback-and-Response.pdf>

^{xli} Hayes, S., & Lovelock, B. (2016). *Analysis of the recreational freshwater angling behaviours of overseas visitors to New Zealand*. Centre for Recreation Research, Department of Tourism, University of Otago.

^{xlii} Flylife (2014). <https://flylife.com.au/phpbb3/viewforum.php?f=17&sid=7e86a84962943d9511cea8bd12d33bf5>

^{xliii} Muhlfeld, C. C., Dauwalter, D. C., D'Angelo, V. S., Ferguson, A., Giersch, J. J., Impson, D., ... & Epifanio, J. (2019). Global status of trout and char: Conservation challenges in the twenty-first century. In J.L. Kershner, J. E. Williams, R.E. Gresswell, & J. Lobon-Cervia (Eds). *Trout and char of the world*, (pp. 717-760). American Fisheries Society

^{xliv} Findlaw.com (2021) <https://www.findlaw.com/state/state-fish-and-game-laws/fishing-laws-by-state-findlaw.html>

^{xlv} Hayes, S., & Lovelock, B. (2019). *Angler displacement on and from pressure-sensitive rivers in Otago and Southland*. Centre for Recreation Research, Department of Tourism, University of Otago.

^{xlvi} Campbell, M. C. (1999). Perceptions of price unfairness: antecedents and consequences. *Journal of marketing research*, 36(2), 187-199.

^{xlvii} Khandeparkar, K., Maheshwari, B., & Motiani, M. (2020). Why should I pay more? Testing the impact of contextual cues on perception of price unfairness for the price-disadvantaged segment in dual pricing. *Tourism Management*, 78, 104075.

**SOUTHLAND FISH & GAME COUNCIL PAYMENT | LIST OF
ACCOUNTS PAID SINCE THE LAST MEETING**

Direct Credits paid:

30/01/2025	Allister Gibson	\$125.00	refund LSL upg to FWF
30/01/2025	BNZ on call a/c	\$150,000.00	transfer to on call a/c
30/01/2025	Estate Rodney Sutton	\$133.00	refund Sen Loyal licence
31/01/2025	C S Waller	\$160.00	refund day licences, bought NFWA
3/02/2025	BNZ	\$1.20	Bank fee
10/02/2025	Maurice Woods	\$270.00	refund NFWA o/a of suffering a stroke (evidence supplied)
13/02/2025	Meridian Energy Ltd	\$95.40	power - Te Anau office
13/02/2025	Meridian Energy Ltd	\$213.50	power - InGill office
17/02/2025	BNZ	\$2.98	Merchant service fee - Visa.
20/02/2025	Peter Spray	\$133.00	refund & upg to FWF
20/02/2025	Te Anau Plumbing	\$186.88	Water pump repair
20/02/2025	Fuji Xerox	\$85.00	photocopies
20/02/2025	Regional Spray	\$359.04	Spot spray at Lake Thomas
20/02/2025	Wanaka helicopters	\$7,624.50	Mallard monitoring flights
20/02/2025	Inland Revenue	\$25,543.05	PAYE
20.02/2025	Officemax	\$20.29	Stationery
20.02/2025	ICC Rates	\$1,450.00	Rates - 17 Eye Street
20.02/2025	NZ Fish & Game Council	\$221,671.71	Levy
20.02/2025	Officemax	\$55.69	Stationery
20.02/2025	Eastern F & G	\$89.99	Xero sub
20.02/2025	Sthld District Council	\$134.70	Rates - 280 Sinclair Road, Te Anau
20.02/2025	Te Anau Signs	\$183.65	3 signs - drag net users
20.02/2025	Sthld District Council	\$219.28	Rates -178 Manapouri Te Anau Hwy
20.02/2025	Steve Gooding Marine	\$89.50	McClay boat
20.02/2025	E H Ball ITM	\$345.24	Traoiler deck screws and Ply.
28/02/2025	A H Blom	\$1,000.00	Pond subsidy
28/02/2025	H & L Elder	\$1,500.00	Pond Subsidy
28/02/2025	M & T van Rooijen	\$1,500.00	pond Subsidy
3/03/2025	BNZ	\$0.80	Bank fee
4/03/2025	M & C Turner	\$266.00	Council meeting travel claim
6/03/2024	One NZ Group	\$399.96	Cellphones
10/03/2025	BP Oil NZ	\$3,451.70	Fleet fuel
17/03/2025	Meridian Energy Ltd	\$106.43	power - Te Anau Office
17/03/2025	Meridian Energy Ltd	\$244.34	power - Invercargill Office
17/03/2025	BNZ	\$3.76	Bank charge - Merchant fee
19/03/2025	BNZ	\$43.00	Bank transaction search fee re: Peter Spray refund
20/03/2025	Inland Revenue	\$17,028.74	
20/03/2025	Invercargill Toolshed	\$60.03	quick change extensions - Monowai Jetty
20/03/2025	L H Concreting	\$1,231.65	Monowai Jetty - concrete placing/joints
20/03/2025	B&B Sports Ltd	\$5,904.62	Fishing Gear (Active Sthld/St Peters fly fishing club)
20/03/2025	Caroline Hospitality Ltd	\$700.00	Catering for Sthld Womens Fly Fishing event
20/03/2025	Eastern Fish & Game	\$89.99	Xero sub
20/03/2025	NZC	\$138.00	Seaflex sub (2)
20/03/2025	Fuji Xerox	\$140.53	Photocoping
20/03/2025	Te Anau Earthworks	\$25,702.50	Monoai Jetty development - piles/excavator
20/03/2025	E H Ball ITM	\$20.18	Tie wire
20/03/2025	E H Ball ITM	\$971.64	Monoawi Jetty - mesh,deformed round,Bar chairs
20/03/2025	E H Ball ITM	\$195.90	Fence rail
20/03/2025	Joss Stroud	\$150.00	Cleanoing 17 Eye St - Jan/Feb
20/03/2025	OfficeMax	\$42.29	Stationery
20/03/2025	Mararaoa Motors	\$308.19	Trailer - fit tyre, tube,labour
20/03/2025	N Z post	\$280.00	Annual P O Box rental
20/03/2025	Hughes Contracting	\$1,449.00	13 tonne digger transport, 6 hrs time - Murray Wards
20/03/2025	Findlater Sawmilling Ltd	\$372.60	Dressed pointed pegs
20/03/2025	Automotive Solutions	\$674.27	Full service NUF116 - Jacob's truck
20/03/2025	Gerhard Uys Media	\$250.00	Murray Fiels press release
20/03/2025	Stuff Ltd	\$166.93	Avertising - extraordinary vacancies
20/03/2025	BDO Invercargill	\$10,228.10	Annual audit fee.
20/03/2025	NZC	\$138.00	Seaflex mthly sub (2)
20/03/2025	Otago Fish and Game	\$189.75	Boundary signage.
20/03/2025	FishJet NZ Ltd	\$500.00	Drift dive.

	Sub total	\$484,641.50	
Plus Direct Debits			
28/01/2025	Eyede Solutions	\$640.00	Fish sales
10/02/2025	BP Oil NZ	\$3,416.26	Vehicle fleet fuel
11/02/2025	One NZ Group	\$393.48	cellphones
28/02/2025	Eyede Solutions	\$1,017.00	Fish sales
6/03/2025	One NZ Group	\$399.96	cellphones
20/03/2025	Paymark	\$21.74	EFTPOS mthly sub
20/03/2025	Velocitynet Ltd	\$244.00	Internet access
13/02/2025	BNZ Visa	\$2,015.81	Placemakers - aerosol spray 199.22
			Placemakers - valve for header tank 53.46
			NZ transport Agency - RUC Bill's truck 772.44
			Freshchoice Te Anau - coffee 25.9
			Hells Pizza - catering for Council meeting 209
			Fiordland Outdoors Co. - water taxi re DOC CCD contract 130
			Pak n Sav - coffee 36.66
			NZ Safety blackwoods - Hiviz vest 27.6
			BNZ- card fee \$2 x 7 14
			Freshchoice Te Anau - groceries 5.55
			Noel lemming - card reader 9.97
			Freshchoice - batteries for laser level 13
			Rebel Sports - Safety boots (Dwight) 275.99
			Placemakers Te Anau - insulation tape 8.49
			Pak n Sav - coffee 28.74
			2Talk Ltd - prepaid landline calls 51.75
			Custom Canvas - wetsuit zip repair 38.1
			Freshchoice - milk 3.05
			Microsot - 365 business sub 232.3
			Ambrosia Floral - Flowers Steve/ father in law passing 113.5
			Bushbuck - staff gear allowance Dwight 314.96
			Mitre 10 Te Anau - lopper blade 18
			Mitre 10 - epoxy putty for tail light repair 19.37
			Fiordland Bakery - lunch for volunteers - periphyton 42.62
			Noel Lemming - 11 alkaline batteries 209
			The Watrehouse - tape,rope,markers,pencils 66.48
			VISME - Cohen 64.13
			Fiordland Pharmacy - sunscreen 28.5
			Southland Batteries - battery for McLay boat 69.29
			Pak n Sav - coffee 27.37

13/03/2025	BNZ Visa	\$4,371.22	Brunel Peaks Café - volunteer lunch	29.5
			Pak n Sav - Tea	13.58
			Placemaers - Back pack sprayer	219.09
			Fiordland frontier - decoy donation for shooter w/end	122.39
			Pak n Sav - coffee	18.97
			BNZ - card fees (7)	14
			Pak n Sav - milk	2.85
			The Warehouse - Vehicle logbook	9.99
			ICC transfer station - monowai jetty	87.81
			Hero internet - prepaid phone callas	30
			2Talk - phone calls	51.75
			LINZ - land titles	16
			LINZ - land titles	16
			NZ transport Agency -RUC Dwight	772.44
			Freshchoice - milk	3.05
			Microsoft - 365 Business	232.3
			Mitre 10 - packaging tape	4.99
			APL Manapouri - Diesel	60
			Te Anau photocentre - divers in river sign	5
			Frehchoice - Groceries for drift dive	50.17
			Just Jeans - staff gear allowance - Steve	59
			Mitre 10 - repir for inflatable	12.3
			Freshchoice - drink, cups for drift diveplastic bags	27.28
			Mitre 10 - drymix concrete - Monowai	92.94
			Lakeside Service ctr - plug for trailer	34.99
			Rebel Sport - swim caps drift dive	88.93
			Pak n Sav - coffee	23.97
			New World Windsor - Sunscreen	32.09
			The watrehouse - laminating	10.5
			NZ transport Agency - RUC Jacob	772.44
			VISME - Cohen	63.21
			Fiordland frontier supplies - staff gear allowance - Bill	161.19
			Fredricks menswear - staff gear allowance - Steve	156.75
			ICC waste transfer station - Monowai jetty waste	45.82
			Pak n Sav - groceries	22.97
			LINZ - titles order (2)	24
			Placemakers - Te Anau - cistern washer	5.7
			LINZ - titles order	8

Grand Total	\$497,160.97
--------------------	---------------------

NATIONALLY THE GAME LIC SALES ARE DOWN 2.2% ON LAST YEARS SALES TO THE SAME TIME

Profit and Loss

Fish and Game New Zealand, Southland Region For the year ended 31 August 2025

	2025	2025 OVERALL BUDGET	VARIANCE TO BUDGET	% OF BUDGET SPENT
REVENUE				
Fish and Game licence sales				
Fish Sales	1,050,247	1,165,930	115,683	90%
Game licence	45	441,490	441,445	0%
Designated Waters Licence Sales - Southland	21,852	-	(21,852)	-
Water quality & ecosystem monitoring	-	12,000	12,000	-
Information & Prosecutions	-	5,000	5,000	-
Total Fish and Game licence sales	1,072,144	1,624,420	552,276	66%
Interest				
Interest Public Trust	100	-	(100)	-
Interest Other	357	39,923	39,566	1%
Total Interest	457	39,923	39,466	1%
Other Income				
Contract Income	22,360	-	(22,360)	-
Fiordland compliance & CCD	-	25,000	25,000	-
Diversion Scheme Fishing	3,001	-	(3,001)	-
Fine Income (Courts)	677	-	(677)	-
Dept. of Conservation Contracts	6,100	-	(6,100)	-
MLC Fish Pass Management- Meridian	7,874	-	(7,874)	-
MPI - Biosecurity CCD programme	(113)	-	113	-
NIWA Monitoring	19,962	-	(19,962)	-
Rent - Office Space Eye St	1,050	1,800	750	58%
Sale of Products	345	50	(295)	690%
Waiau Trust	1,225	-	(1,225)	-
Eftpos transactions	334	-	(334)	-
Total Other Income	62,813	26,850	(35,963)	234%
Total REVENUE	1,135,415	1,691,193	555,778	67%
EXPENSES				
Outputs				
Species management				
Population monitoring	7,333	20,000	12,667	37%
Harvest assessment	-	4,000	4,000	-
Releases	21	150	129	14%
Total Species management	7,354	24,150	16,796	30%
Habitat protection & management				
RMA Consents evaluation	-	50	50	-
RMA Plans & Policy	-	50	50	-
ES Water & Land Plan Appeal	(5,289)	-	5,289	-
Works & management	312	2,100	1,788	15%

Profit and Loss

	2025	2025 OVERALL BUDGET	VARIANCE TO BUDGET	% OF BUDGET SPENT
Assisted habitat	7,459	50	(7,409)	14,918%
Assessing & monitoring	250	-	(250)	-
Total Habitat protection & management	2,732	2,250	(482)	121%
Angler & Hunter participation				
Access	(11,914)	1,000	12,914	-1,191%
Other Publications	687	5,400	4,714	13%
Pressure sensitive fisheries	189	400	211	47%
Training & R3	(8,955)	1,500	10,455	-597%
Total Angler & Hunter participation	(19,993)	8,300	28,293	-241%
Public interface				
Communication	90	800	710	11%
Public promotions	32	130	98	24%
Visitor facilities	57	300	243	19%
Fish in schools programme	468	500	32	94%
Total Public interface	646	1,730	1,084	37%
Compliance				
Ranging	798	1,250	452	64%
Ranger training	-	3,600	3,600	-
Compliance	3,777	4,700	923	80%
Total Compliance	4,574	9,550	4,976	48%
Licensing				
Commission	38,029	64,297	26,268	59%
Total Licensing	38,029	64,297	26,268	59%
Council				
Council meetings	3,319	8,500	5,181	39%
Total Council	3,319	8,500	5,181	39%
Planning & reporting				
Mngt Plan	-	1,000	1,000	-
Reporting	9,214	12,000	2,786	77%
National Liaison	-	1,500	1,500	-
Total Planning & reporting	9,214	14,500	5,286	64%
Total Outputs	45,876	133,277	87,401	34%
Overheads				
Employee related costs				
Salaries and wages	361,323	738,359	377,036	49%
Fringe Benefit Tax	-	5,000	5,000	-
ACC Levy	-	1,300	1,300	-
Staff training & other expenses	2,428	10,300	7,872	24%
KiwiSaver contributions	14,453	-	(14,453)	-
Total Employee related costs	378,204	754,959	376,755	50%
Other expenses				

Profit and Loss

	2025	2025 OVERALL BUDGET	VARIANCE TO BUDGET	% OF BUDGET SPENT
Communications & Consumables	8,632	14,400	5,768	60%
Field equipment	3,222	2,500	(722)	129%
General	3,197	33,700	30,503	9%
Office equipment	1,756	7,000	5,244	25%
Office premises	10,299	74,200	63,901	14%
Vehicles	22,518	38,904	16,386	58%
Total Other expenses	49,623	170,704	121,081	29%
Total Overheads	427,827	925,663	497,836	46%
Depreciation	-	15,164	15,164	-
Talks to interest groups	-	105	105	-
Total EXPENSES	473,703	1,074,209	600,506	44%
Operating Surplus/(Deficit)	661,712	616,984	(44,728)	107%
Less other Expenses				
NZ Fish & Game Levy	(385,516)	(771,032)	(385,516)	50%
Total Less other Expenses	(385,516)	(771,032)	(385,516)	50%
NET SURPLUS/(DEFICT)	276,196	(154,048)	(430,244)	-179%

