

Clinton & Worsley Rivers: Controlled-Period Licence holder information

Congratulations on securing a Controlled-Period Licence for the Clinton or Worsley River.

Here is essential information to help you plan your trip safely and in compliance with regulations.

Licence Requirements

- You must hold a current Whole-Season Sports Fishing Licence, and a Controlled-Period Licence.
- Please carry both so you can produce them upon request by a Ranger.
- Non-compliance may result in enforcement action.

Clean Gear Certification (Biosecurity)

- A Clean Gear Certificate is mandatory before entering the Clinton or Worsley Rivers.
- This certificate can be obtained from Southland Fish & Game (Invercargill and Te Anau offices), Department of Conservation Te Anau (Visitor Centre), Outside Sports (Te Anau) and Patagonia (Queenstown).
- Cleaning Process:
 - CHECK: Remove all visible plant material and/or mud from gear.
 - CLEAN: Use an approved cleaning solution (e.g., 10% detergent) and scrub thoroughly.
 - DRY: Ensure non-absorbent gear is dry to touch; soak absorbent gear completely.
- Felt-soled boots are not permitted.
- For more information, see [here](#).

Commercial Activity

- The Worsley River is situated within the Glaisnock Wilderness Area. No commercial activities, including fishing guiding, are permitted in this area.

Access & Logistics

Clinton River: Access to Glade Wharf is via personal vessel or the commercial water taxi which departs from Te Anau Downs. From the wharf, the Milford Track provides ready access along the entire length of the Clinton River. Watercraft (boats, packrafts etc) are not permitted in the Clinton River catchment.

Worsley River: Access to the Worsley Hut is via personal vessel or by private arrangement with a commercial water taxi. An informal track has been formed by anglers and hunters behind the hut which heads up the true left bank of the river.

Overnight Camping Information for the Clinton Valley

- Overnight camping within 500m of the Milford Track is strictly prohibited. Due to the narrow valley, camping anywhere in the Clinton valley is effectively prohibited. This is monitored and enforced by the Department of Conservation. The Department of Conservation suggests two camping areas:

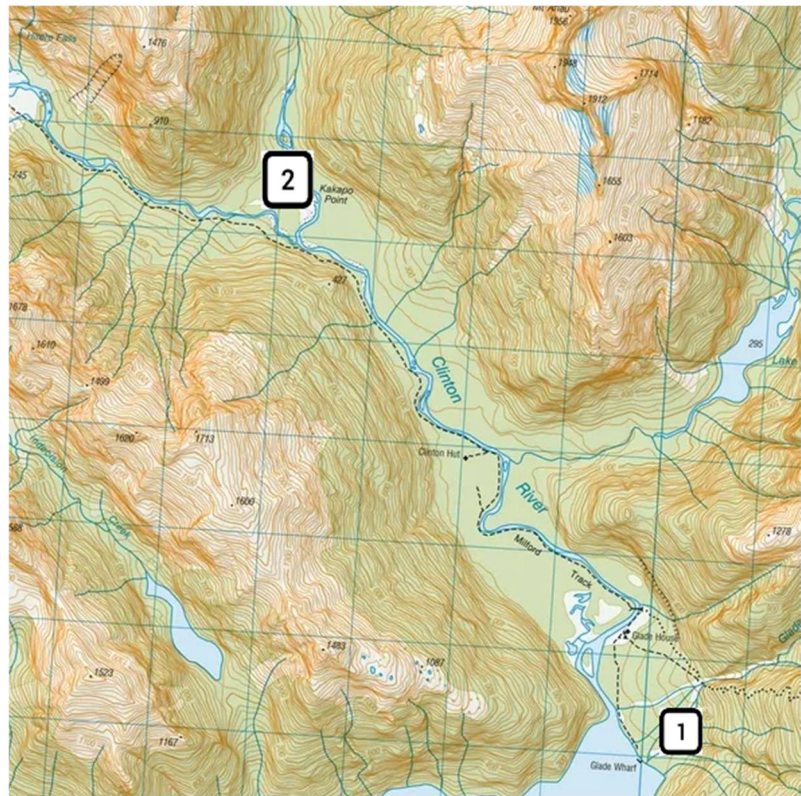
1. Glade Burn – Approx 500m up the tributary from Glade Wharf. This is a suitable campsite when starting/ending your trip early/late in the day, OR when the Clinton River is too high to cross safely to access the North Branch camping areas.

2. Clinton River North Branch – cross the Clinton River upstream of the confluence and continue 500m upstream to a flat area. The Clinton can become uncrossable during high flows, in this situation you will need to go downstream, across the swing bridge, to campsite 1.

- The Neale Burn also offers camping more than 500m from the Milford Track.

- Camping etiquette and 'leave no trace' principles apply: Carry out all rubbish, bury human waste away from waterways, respect other users and DoC staff.

- Note, DoC huts in the Clinton valley are only available to those who have booked to walk the entire Milford Track. Also, there are privately owned huts and facilities managed by concessionaires, which are also unavailable to anglers.



Be aware of river conditions, especially during and after rainfall.

Respect the wilderness setting and other Milford Track users.

Enjoy your time in one of the world's most spectacular fisheries.

Key Contacts

Southland Fish & Game: Invercargill (03) 215 9117 Te Anau (03) 249 4288

Department of Conservation Te Anau Visitor Centre: (03) 249 7924